

Title

# Dongle migration from Wibukey

Description

You can migrate your dongle by the following steps.

## Topics

|                                |    |
|--------------------------------|----|
| Preparation.....               | 2  |
| Enter license ticket ID .....  | 3  |
| Check a firmware version ..... | 5  |
| Firmware update .....          | 6  |
| Migrate your dongle .....      | 11 |

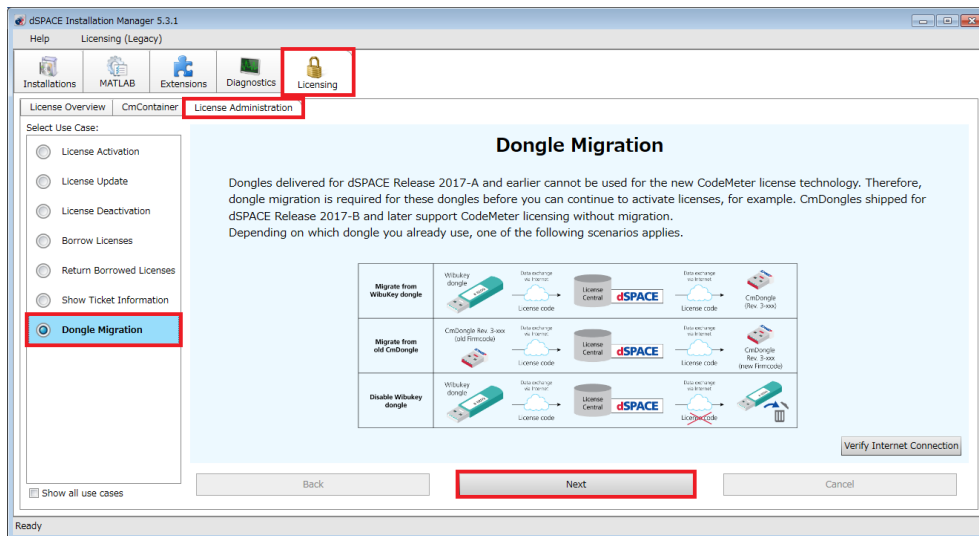
## Preparation

1. Connect your Wibukey dongle and CodeMeter dongle for migration to USB ports of your host PC.
2. Startup dSPACE Installation Manager from start menu.  
(Start menu -> dSPACE Installation Manager -> dSPACE Installation Manager)

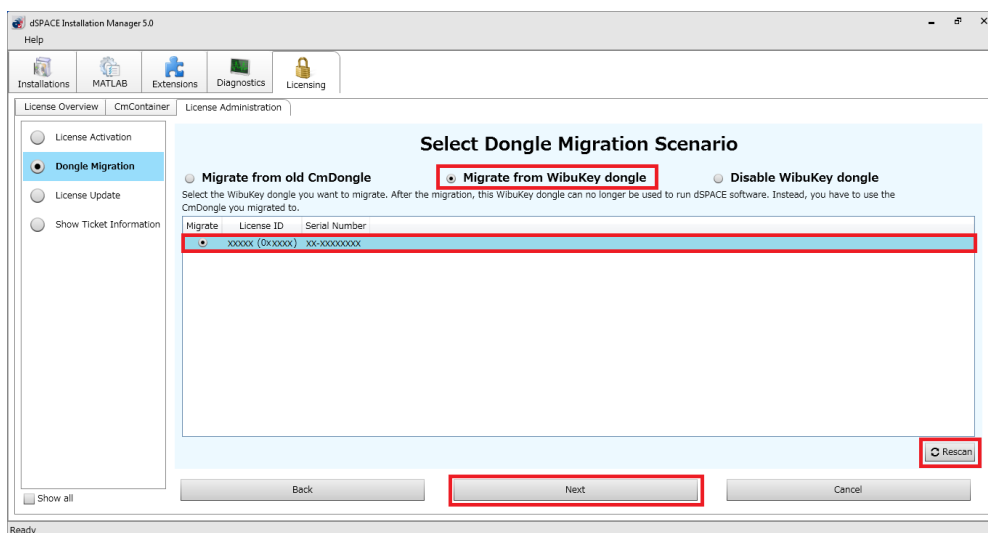
## Enter license ticket ID

Check if your dongle is required a Firmware Update.

1. Open "License" tab at the top of the screen.
2. Open "License Administration" tab.
3. Select "Dongle Migration"
4. Click "Next" button.



5. Check the check box on "Migrate" column.
6. Click "Next" button.



- Open your license ticket and copy ticket ID on Ticket Group ID field

**License Overview** Embedded Success **dSPACE**

Delivery Date: 2018-03-05  
 Sales Order: AU-XXXXXX  
 Purchase Order: JPN18XXXX

**Required License**

| License               | Ticket ID                      |
|-----------------------|--------------------------------|
| WibuKey Dongle #XXXXX | DSXXXX-XXXXX-XXXXX-XXXXX-XXXXX |

- Enter the copied ticket ID in the Ticket ID field on dSPACE Installation Manager.
- Click "Next" button.

**Enter Ticket ID**

Ticket: DSXXXX-XXXXX-XXXXX-XXXXX-XXXXX Add

Enter the ticket ID as you received it from dSPACE to migrate the "20-2044020" Wibukey dongle (license ID: 29190 (00/200)). Each Wibukey dongle requires a specific ticket.

| Activate                         | License Name          | Ticket                         |
|----------------------------------|-----------------------|--------------------------------|
| <input checked="" type="radio"/> | WibuKey Dongle #XXXXX | DSXXXX-XXXXX-XXXXX-XXXXX-XXXXX |

Back Next Cancel

Then the dongle information will be displayed.

\*If dongle information does not appear, click "Rescan" button.

**Select CmDongle**

Select the CmDongle you want to migrate to. During migration, the CmDongle receives the license ID of the WibuKey dongle that is being migrated as WibuKey ID: 59756 (0xE96C). You can then use this CmDongle to run dSPACE software of dSPACE Release 2017-A and earlier.

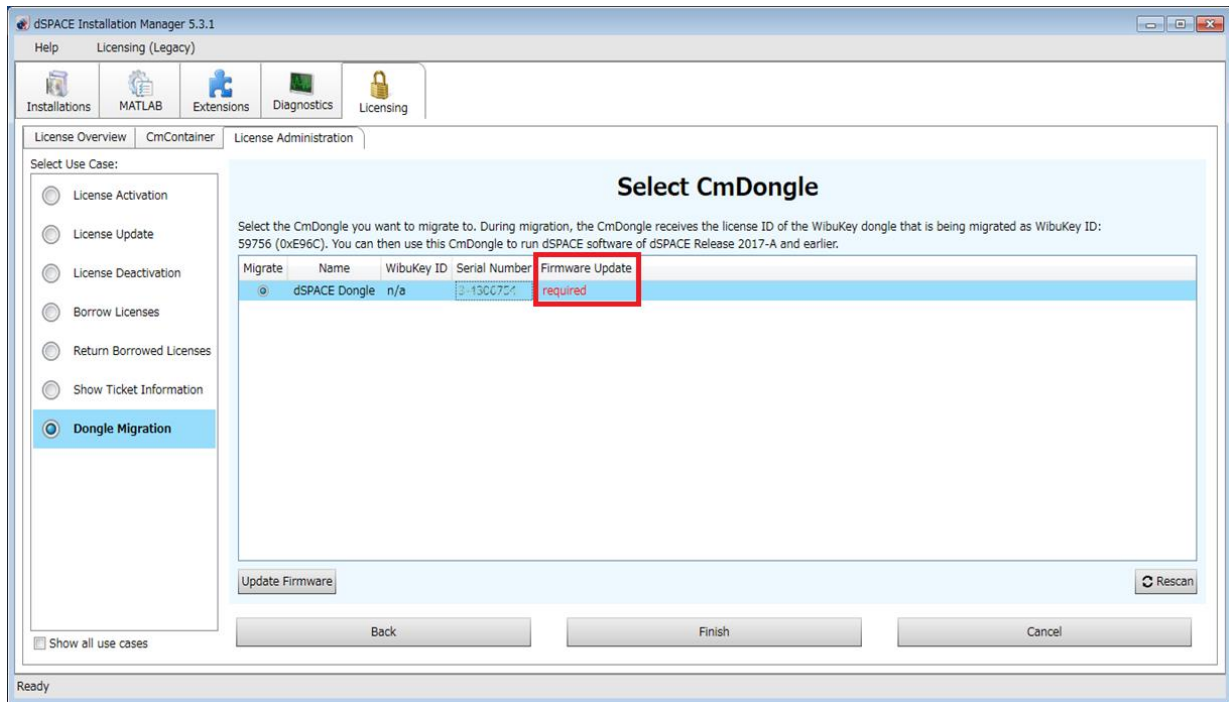
| Migrate                          | Name          | WibuKey ID | Serial Number | Firmware Update |
|----------------------------------|---------------|------------|---------------|-----------------|
| <input checked="" type="radio"/> | dSPACE Dongle | n/a        | 2-1300751     | required        |

Update Firmware Rescan

Back Finish Cancel

## Check a firmware version

1. Check the status displayed in the "Firmware Update" column.



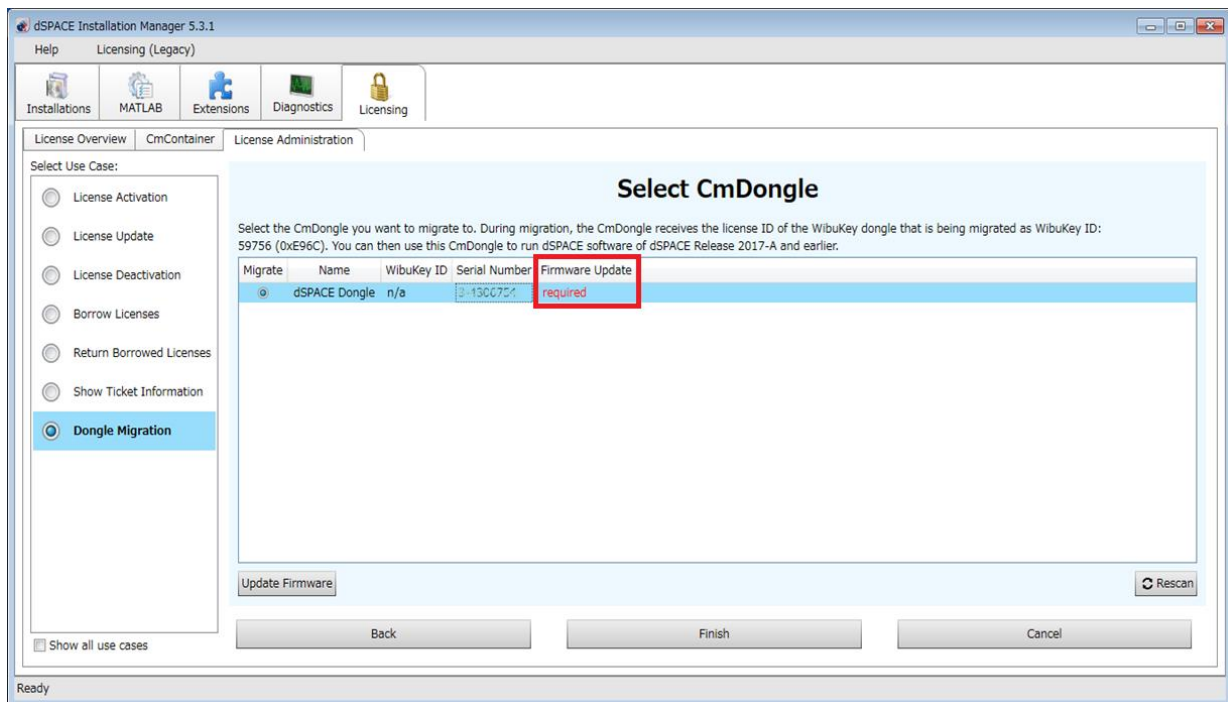
The next step depends on the status of your dongle.

Select the following link according to the displayed status.

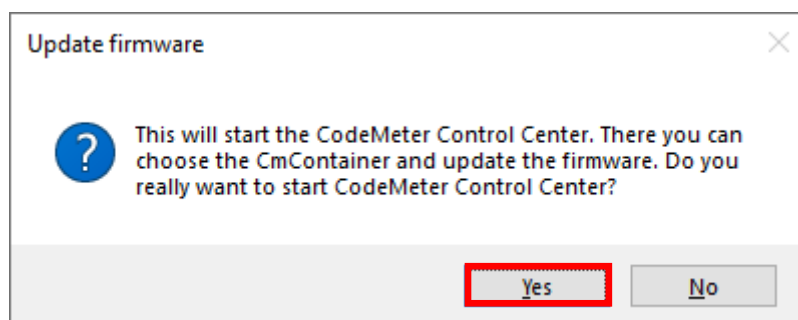
| Status       | Link                                | Remarks                                |
|--------------|-------------------------------------|--|
| Required     | <a href="#">Firmware update</a>     | Require updating your dongle firmware. |
| not required | <a href="#">Migrate your dongle</a> | Firmware update is not required.       |

## Firmware update

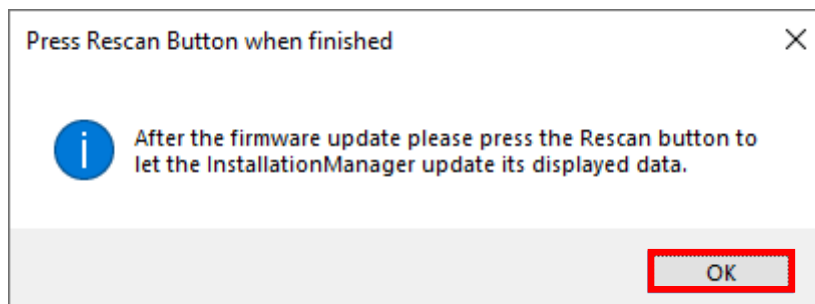
1. Check the checkbox on "Migrate" column.
2. Click "Update Firmware" button.



3. Click "Yes" button in the "Update firmware" dialog.

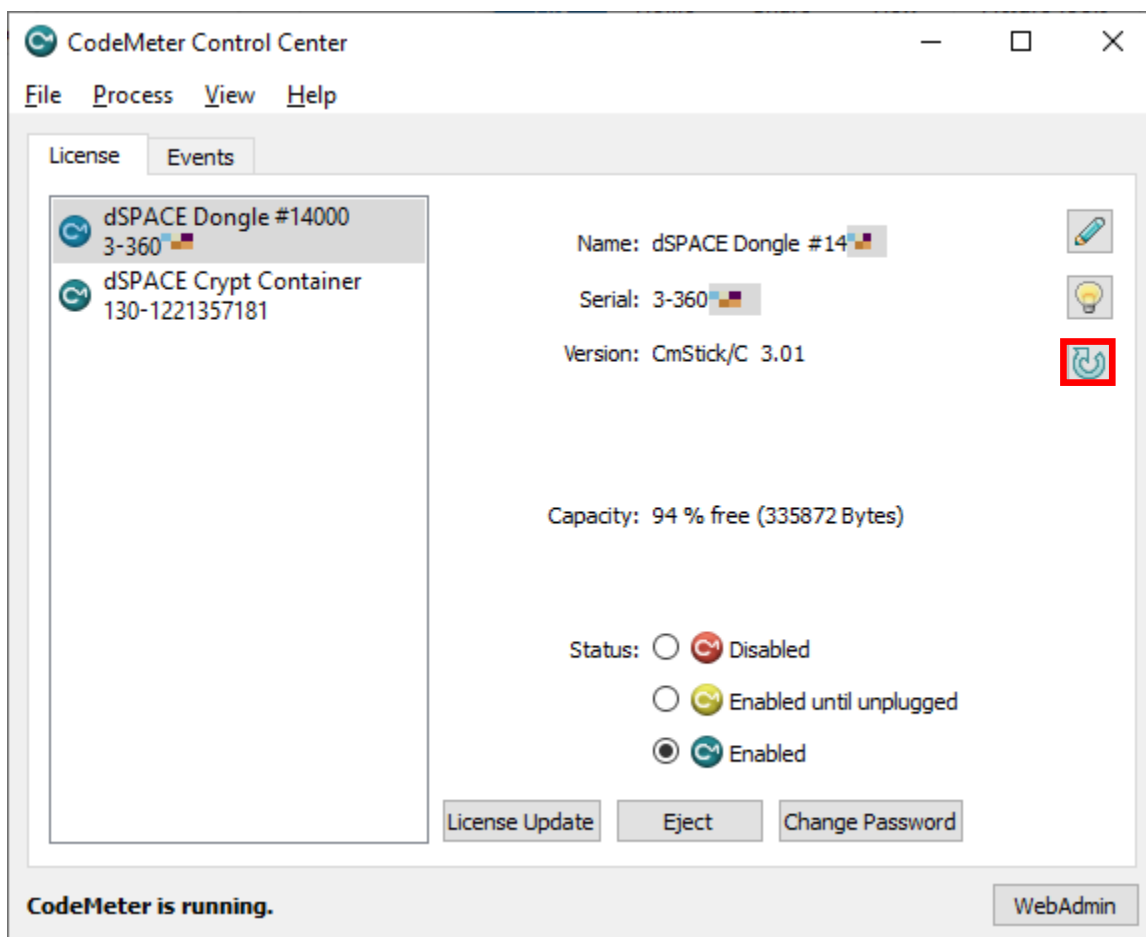


- Click "OK" button in the "Press Rescan Button when finished" dialog.

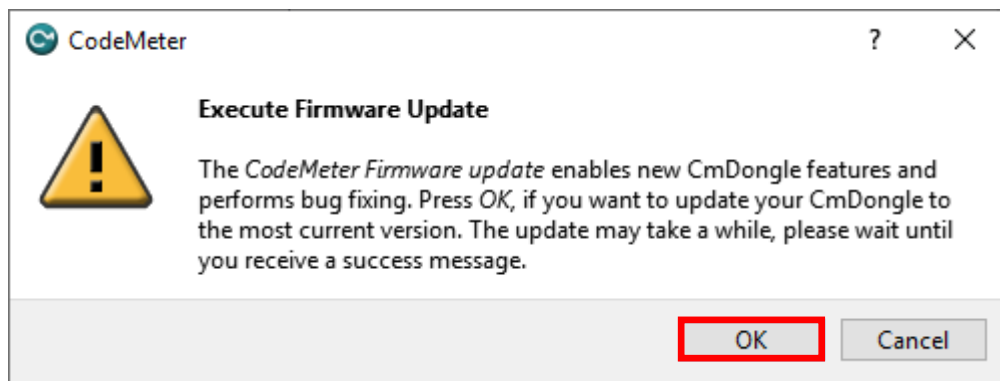


CodeMeter Control Center will be started up.

- Click "Update Firmware of selected CmDongle" button.

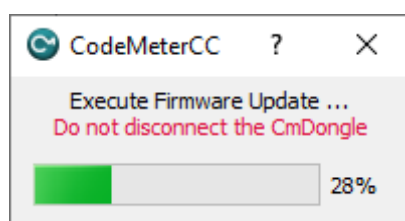


6. Click "OK" button in the "CodeMeter" dialog.



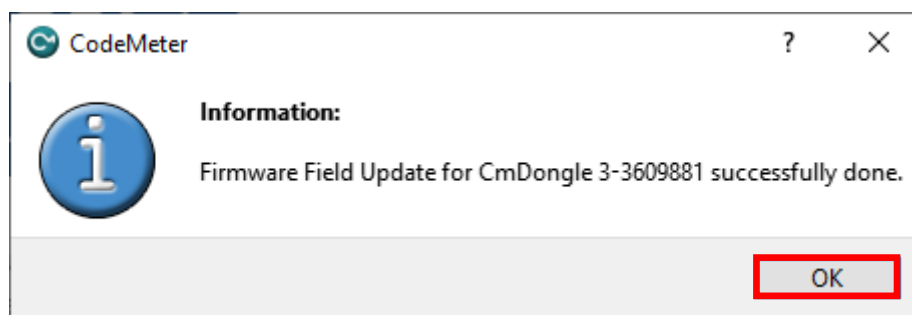
7. Wait till the firmware update is done.

\*Do not remove your dongle during this updating.



The following dialog will be displayed when the firmware update is done.

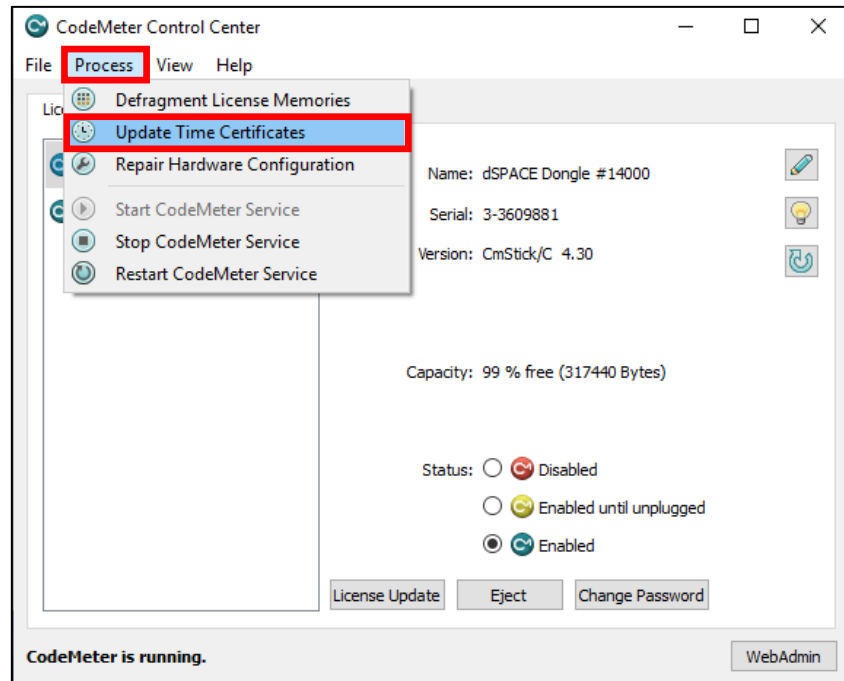
8. Click "OK" button.



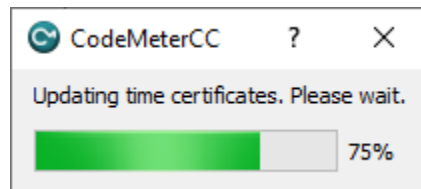


Update your dongle time information.

9. Open "Process" menu.
10. Select "Update Time Certificates".

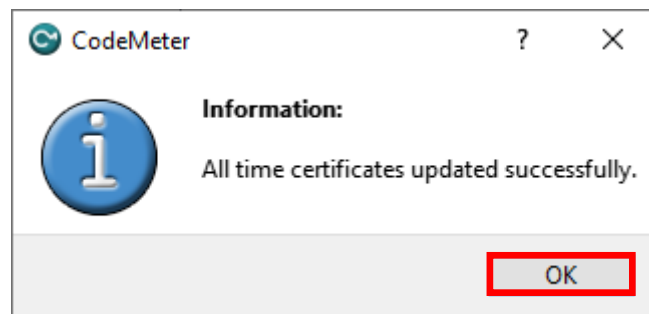


11. Wait till the update is done.

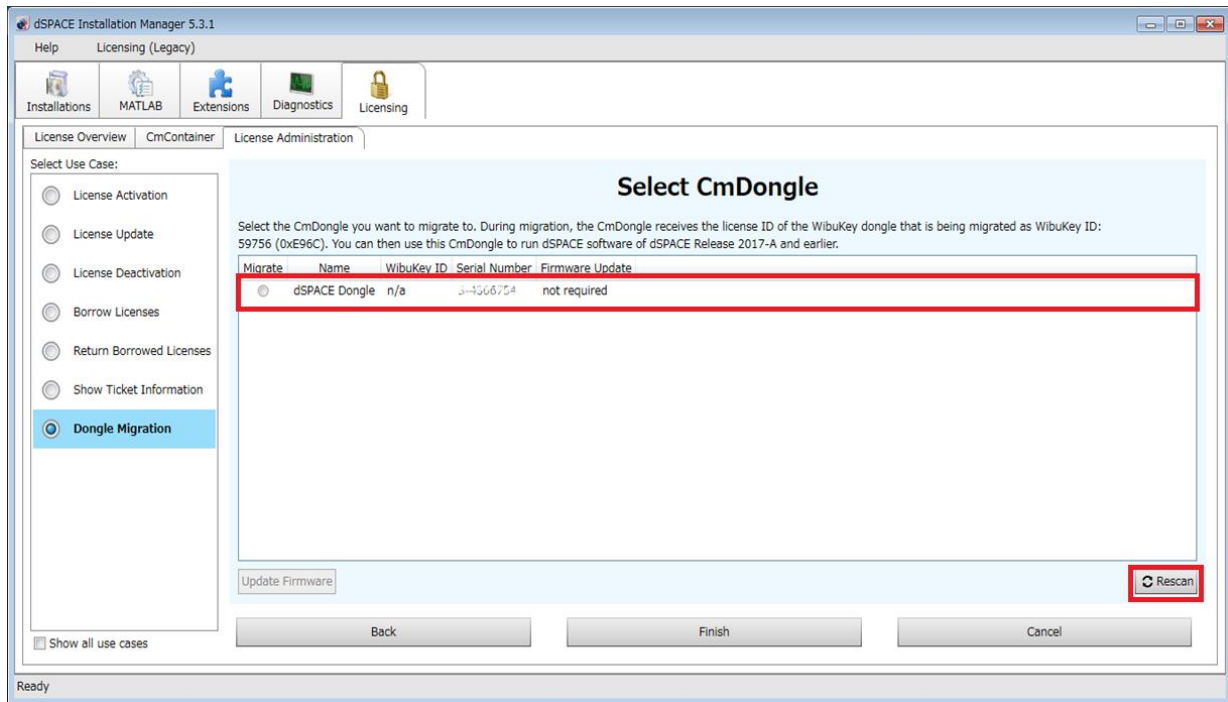


The update is done when the following dialog is displayed.

12. Click "Yes" button,



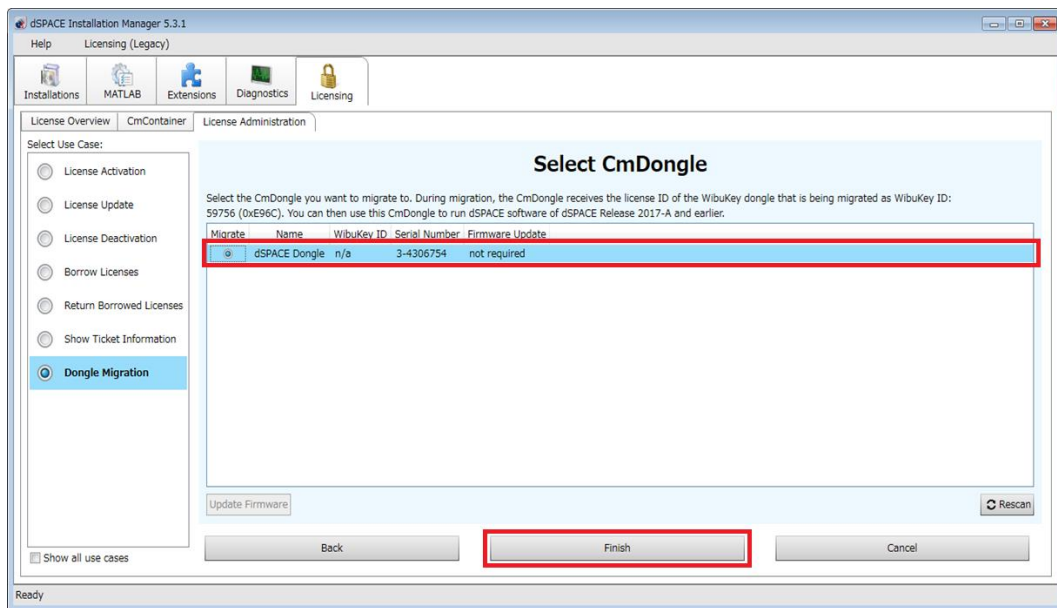
13. Close CodeMeter Control Center
14. Click "Rescan" button and update information with dSPACE Installation Manager.



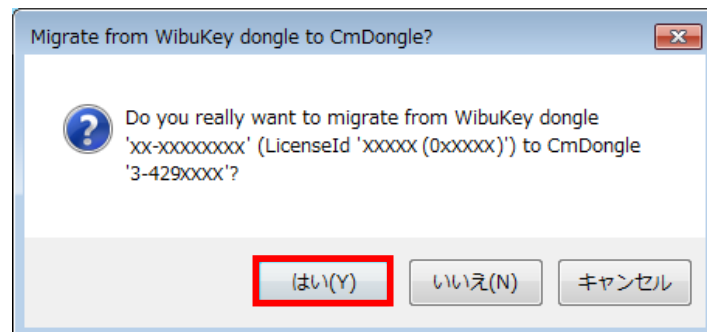
Firmware update is completed when the status changes to "not required"  
Then, go on the next page and migrate your dongle.

## Migrate your dongle

15. Select Migrate from old CmDongle, check the check box on "Migrate" column.
16. Click "Finish button."



17. Click "Yes" button on the "Migrate CmDongle?" dialog.



The migration procedures will be completed when you see the message "Migration Completed"

