

Title

Installing dSPACE Software

Description

You can install dSPACE Software by the following steps.

Topics

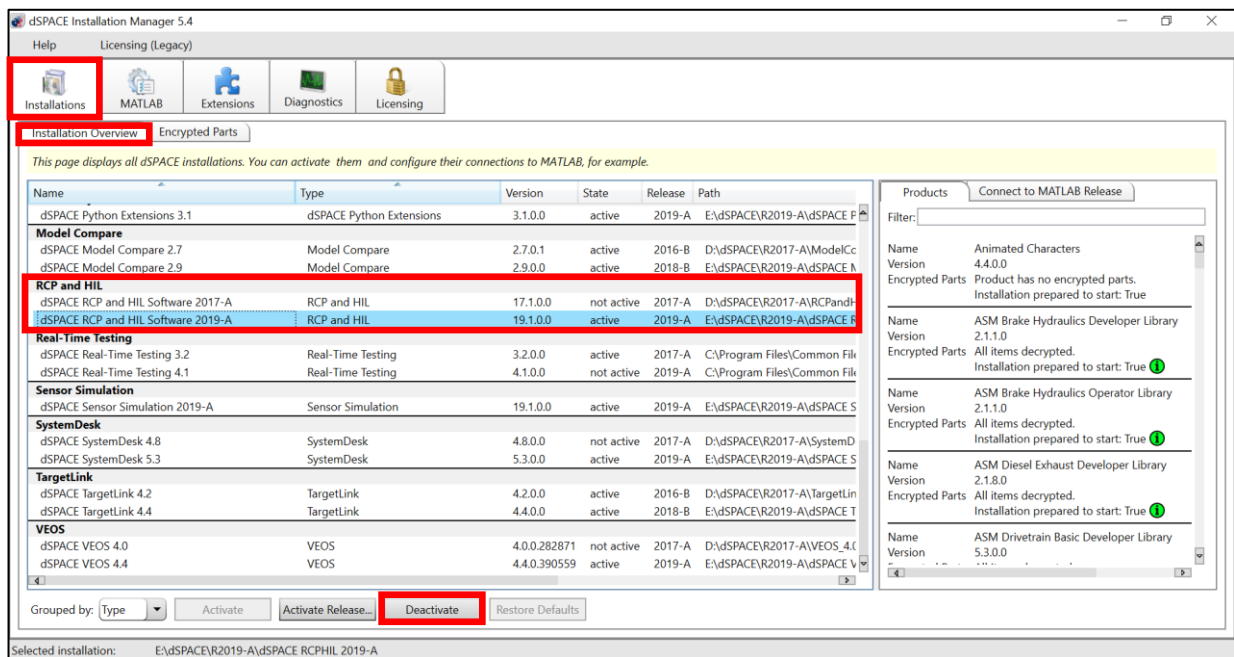
Preparation.....	2
Start MasterSetup	4
Products other than RCP and HIL Software	7
dSPACE RCP and HIL Software.....	9
dSPACE Solution	14
Other dSPACE Tools	18

Preparation

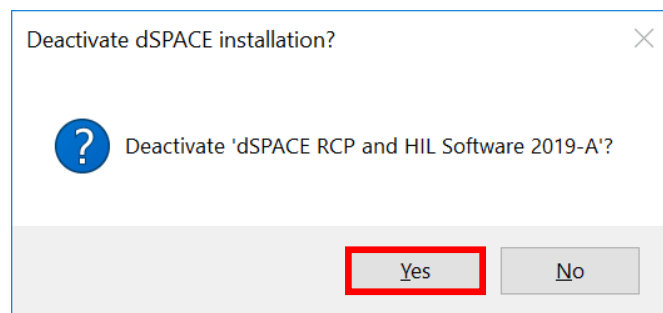
Please check the following procedures if the higher version of dSPACE RCP and HIL is installed on your PC.
If you have never installed dSPACE RCP and HIL, skip to [this page](#).

*dSPACE Software may not be installed correctly if you install older dSPACE RCP and HIL software while the higher version of dSPACE RCP and HIL software is activated.

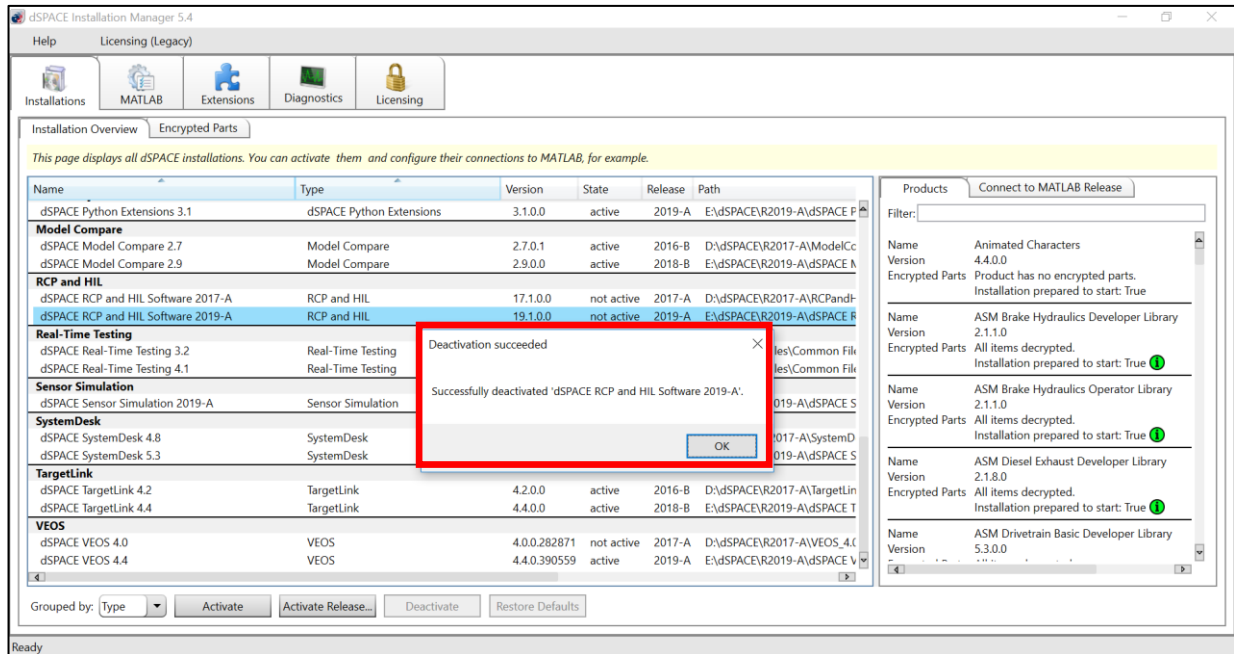
1. Start dSPACE Installation Manager.
(Start menu -> dSPACE Installation Manager -> dSPACE Installation Manager)
2. Select "Installations" tab.
3. Select "Installation Overview" tab.
4. Check "RCP and HIL" group and select RCP and HIL which the "State" column is "active".
5. Click "Deactivate" button.



6. Select "Yes" button in the "Deactivate dSPACE Installation?" dialog.

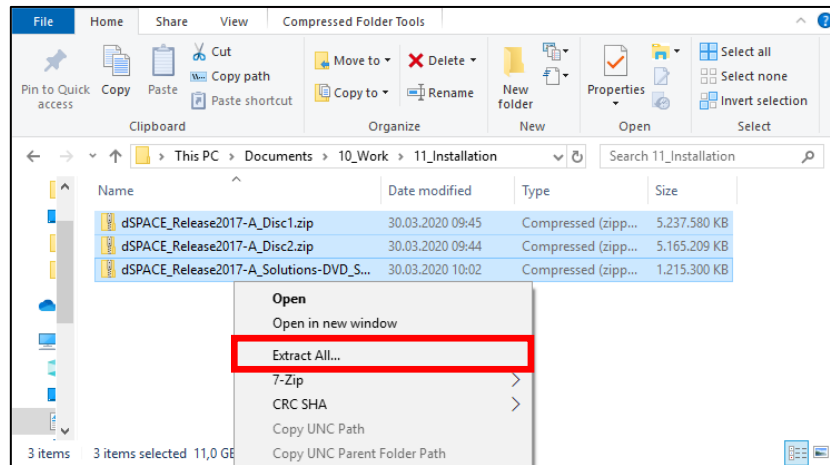


7. Deactivation of RCP and HIL will be completed when the "Deactivation succeeded" dialog is displayed.

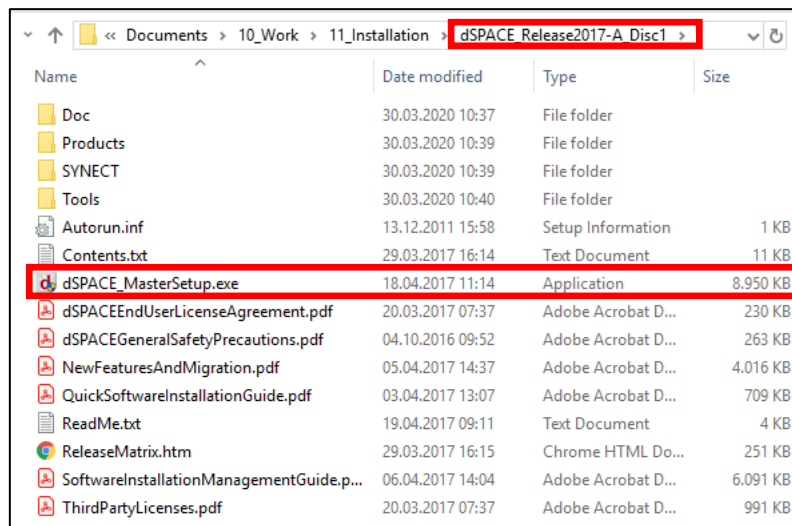


Start MasterSetup

1. Close all open programs.
2. Extract installation files downloaded from Download dSPACE Release page on our web page to any folder.

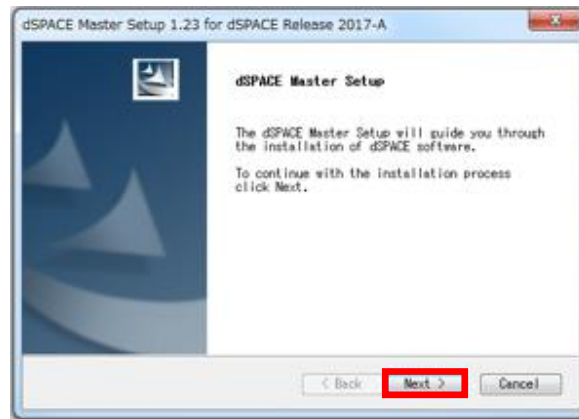


3. Move to the folder of Disc 1.
4. Execute "dSPACE_MasterSetup.exe".

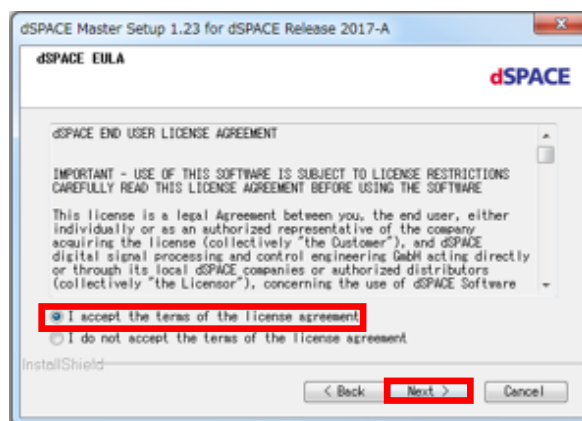


MasterSetup will be started up.

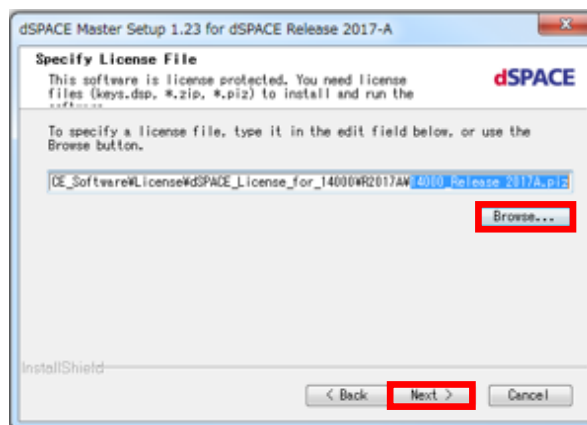
- Click "Next" button.



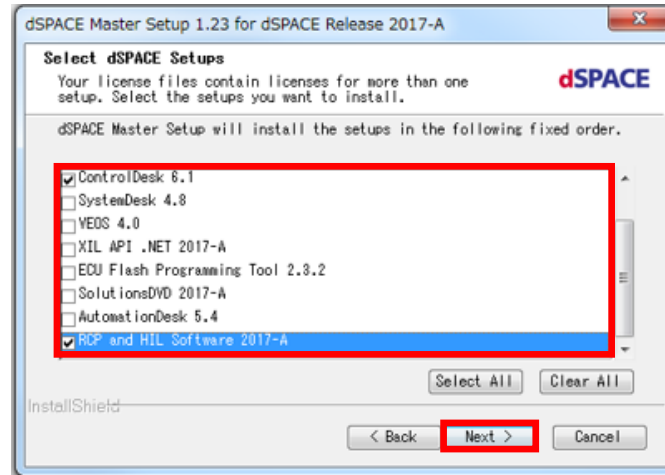
- Read dSPACE EULA and Select Accept.
- Click "Next" button.



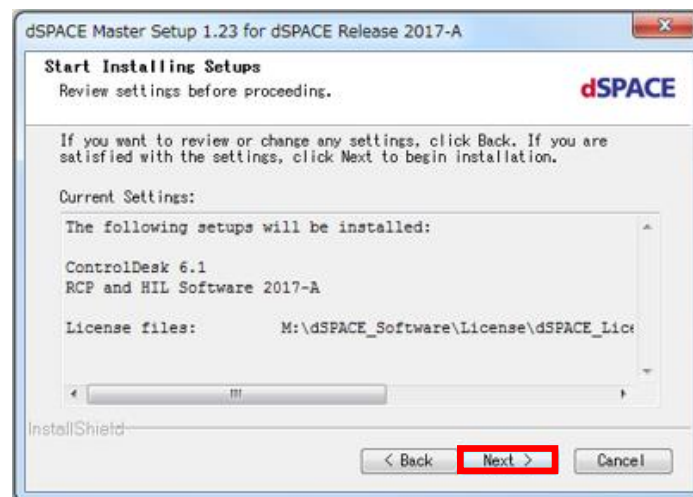
- Specify your license file by "Browse" button and click "Next" button.
You can specify .zip, .piz and .key file.



9. Select dSPACE Software which you want install and click "Next" button



10. Click "Next" button then installers of dSPACE Software you selected will be started up in sequence.



The next step depends on the software which you install.

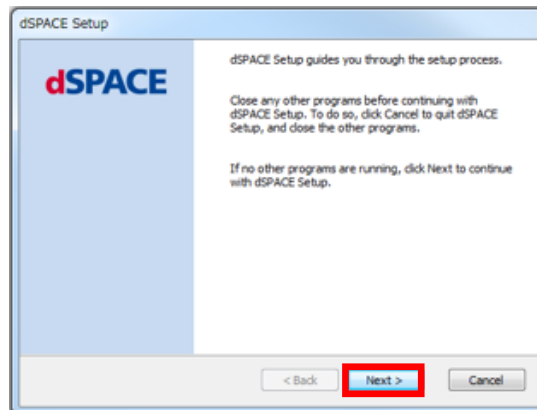
See the section for the software which you install.

dSPACE Products to be installed	Example	Referred section
Products other than RCP and HIL software.	ControlDesk	Link
dSPACE RCP and HIL Software	dSPACE RCP and HIL Software	Link
dSPACE Solutions	DS1006QC Ethernet Solution	Link
Other dSPACE Tools	SYNECT	Link

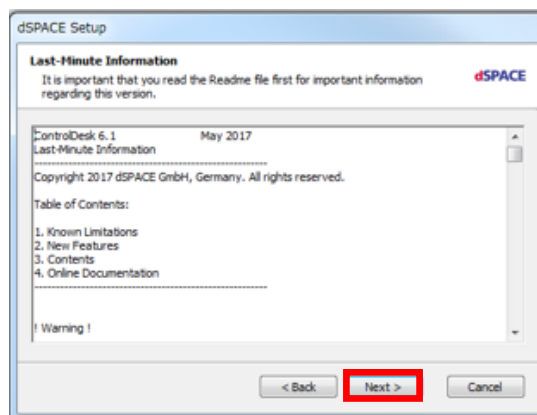
Products other than RCP and HIL Software

You can see the installation procedure of ControlDesk as an example.

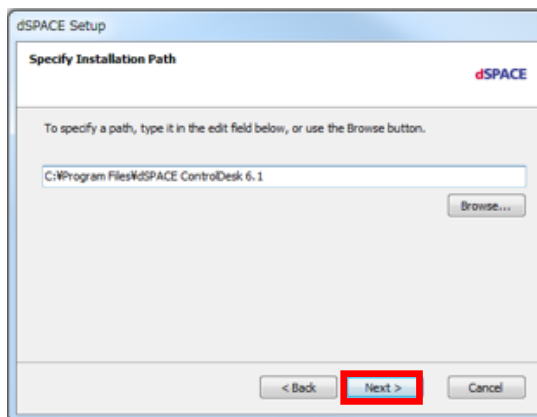
1. Click "Next" button.



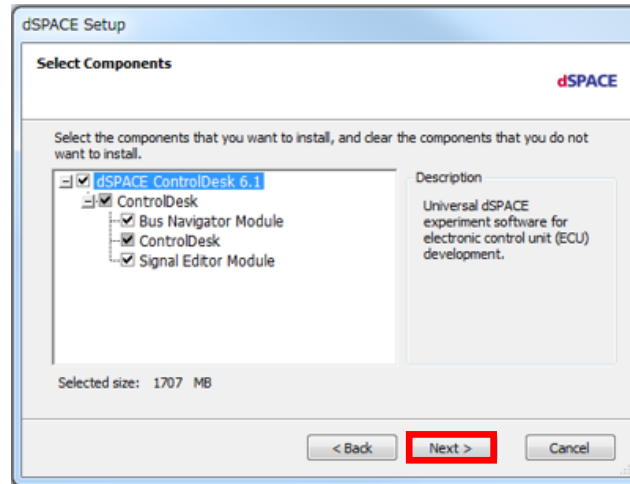
2. Click "Next" button.



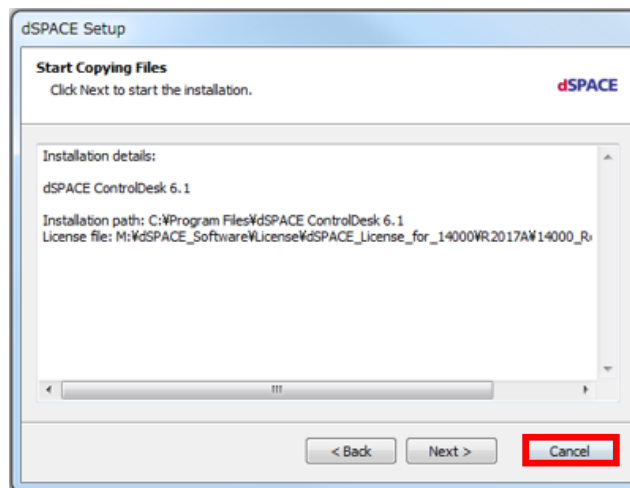
3. Select Installation folder and click "Next" button.



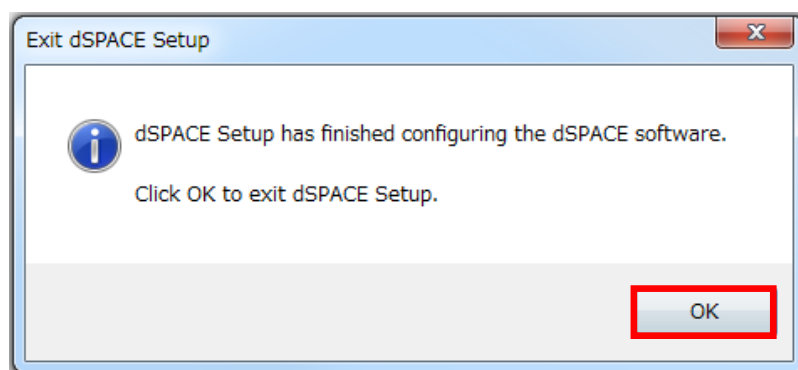
4. Select the components that you want to install and click "Next" button.



5. Click "Next" button then the installation will be started.



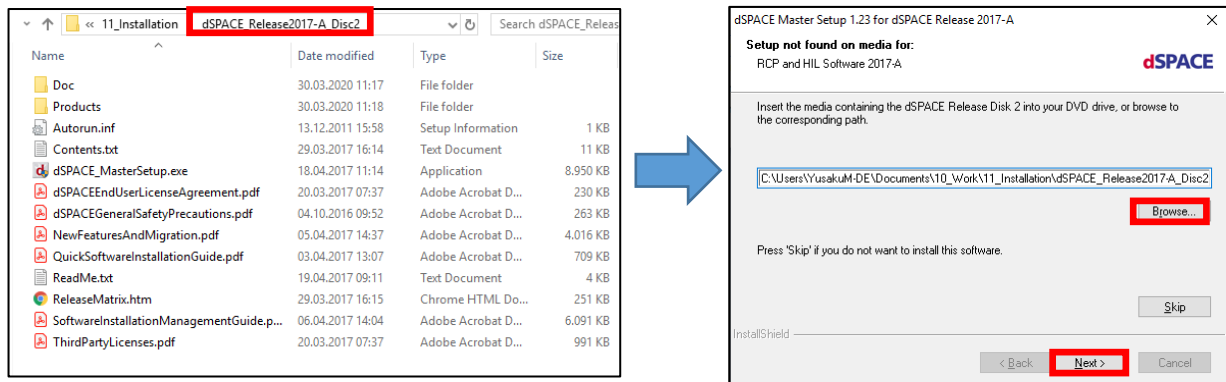
6. The installation will be done when the following message will be displayed.



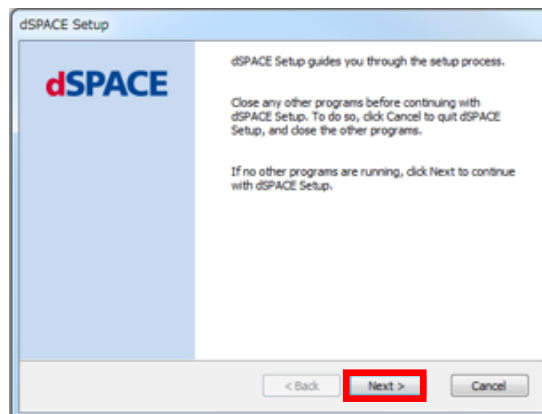
dSPACE RCP and HIL Software

It is required to specify the folder path of Disc 2 when you install dSPACE RCP and HIL.

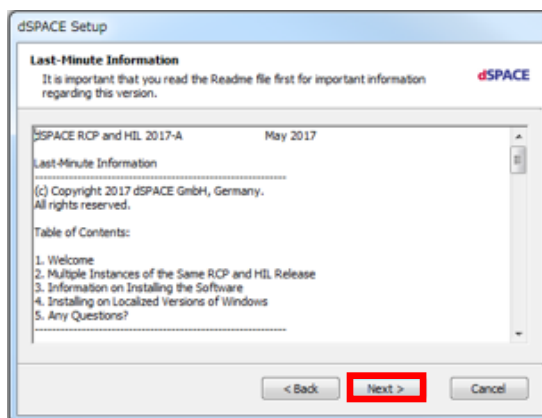
1. Specify the folder of Disc 2 and click "Next" button.



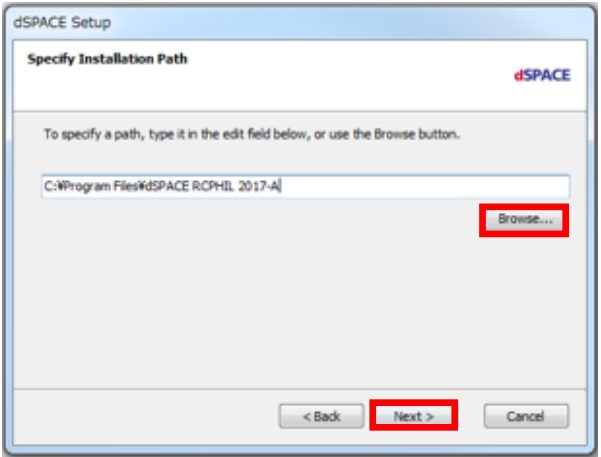
2. Click "Next" button.



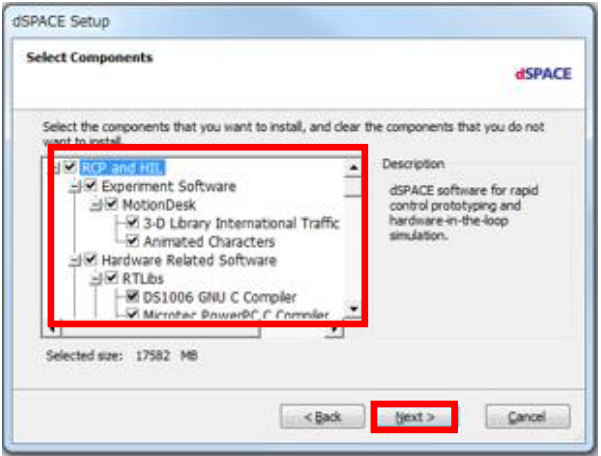
3. Click "Next" button.



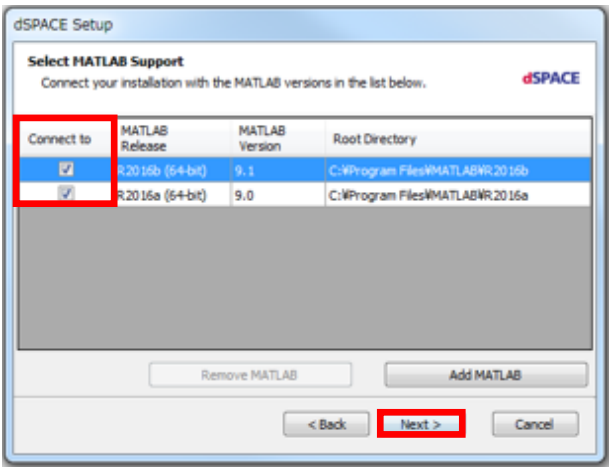
4. Specify installation folder by the "Browser" button and click "Next" button.



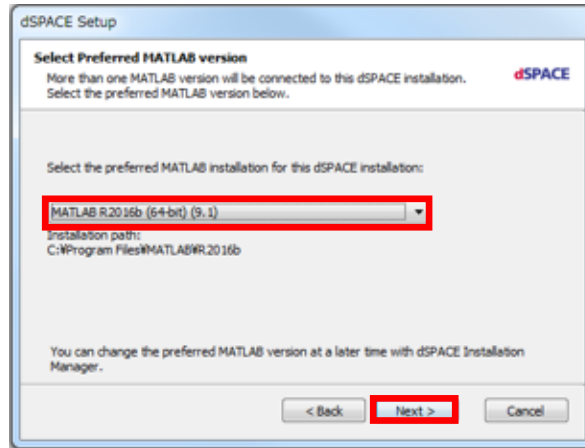
5. Select components that you want to install.



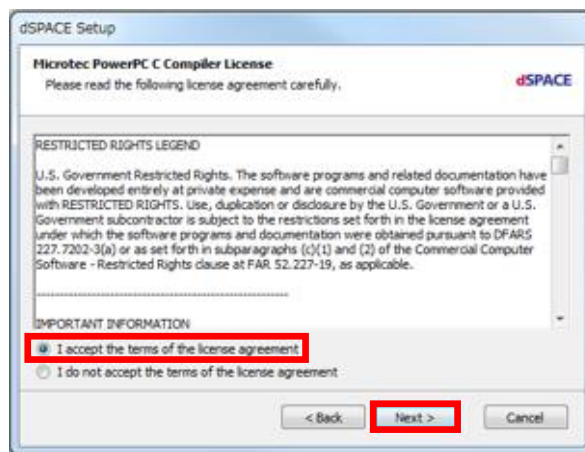
6. Select MATLAB versions to connect to dSPACE RCP and HIL Software and click "Next" button.



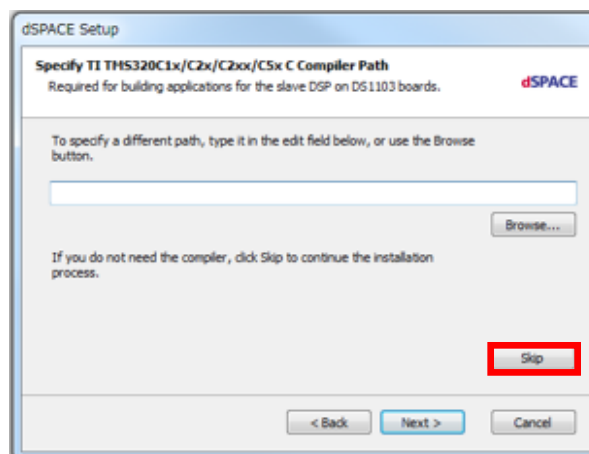
7. Select preferred MATLAB version to use with dSPACE RCP and HIL Software and click "Next" button.



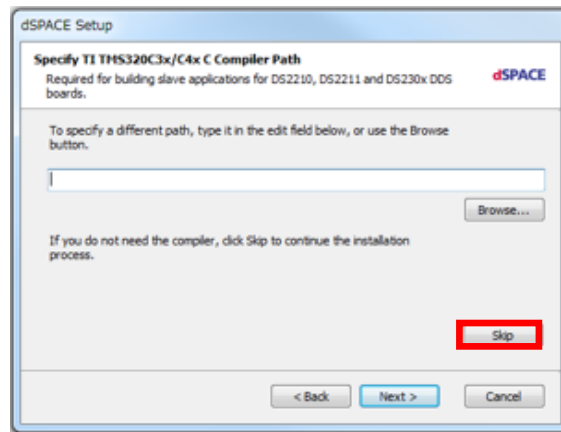
8. Accept to install PowerPC C Compiler and click "Next" button.



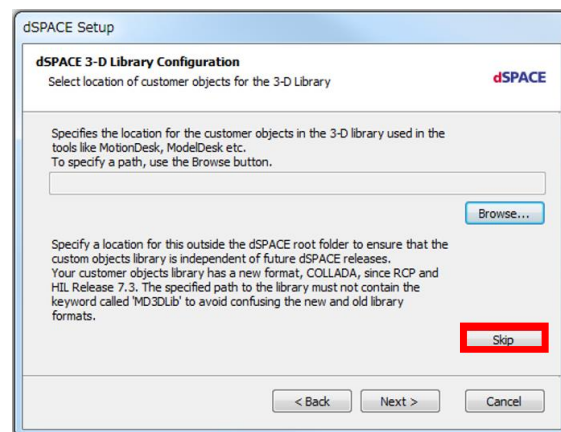
9. Specify installed folder of TI compiler for DS1103 boards and click "Next" button.
if you do not use TI compiler, click "Skip" button.



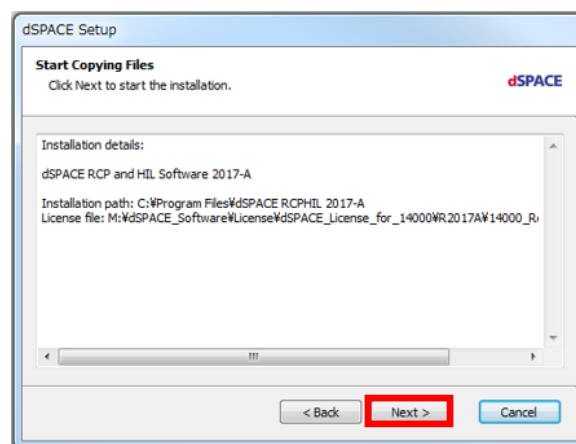
10. Specify installed folder of TI compiler for DS2210, DS2211 and DS230x boards and click "Next" button.
If you do not use TI compiler, click "Skip" button.



11. Specify installation folder of 3-D Library.
If you do not use 3-D Library, click "Skip" button.



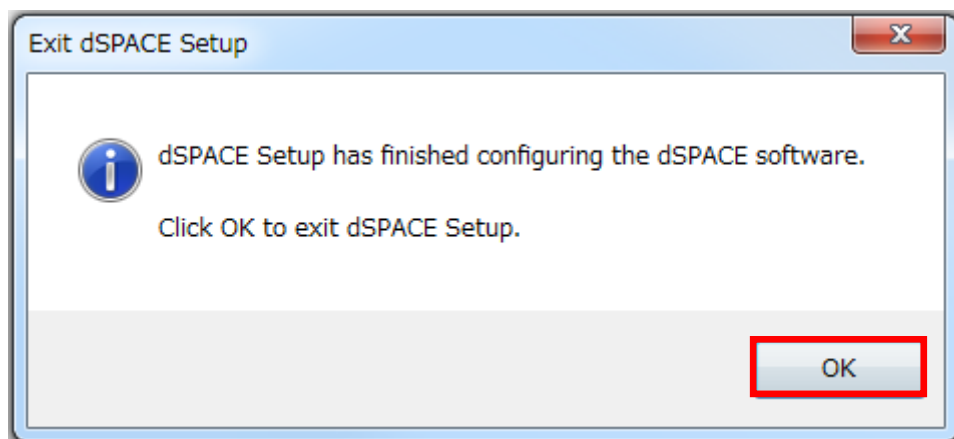
12. Click "Next" button and then installation will be started.



13. Sometimes the confirmation dialog to install device driver will be displayed, click "Install" button.
If you enable "Always trust software from ..." checkbox, this confirmation message is not displayed after that.



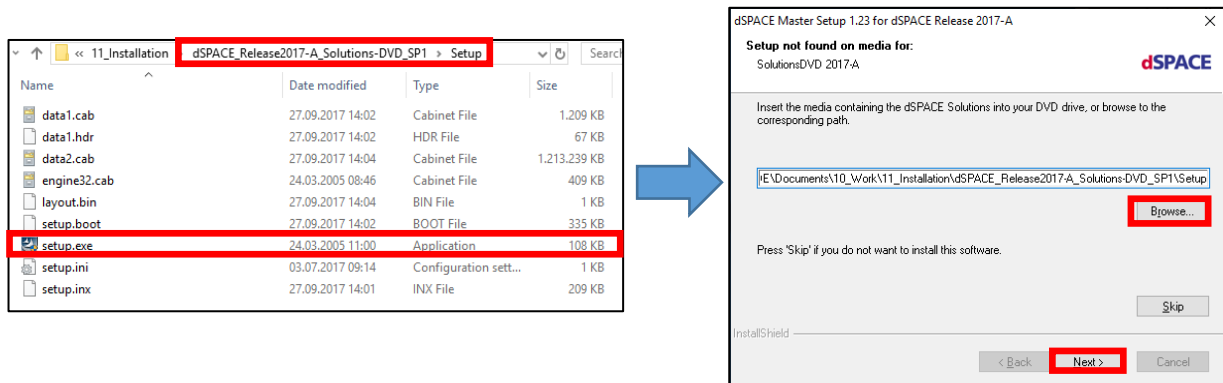
14. The installation will be done when the following message is displayed.



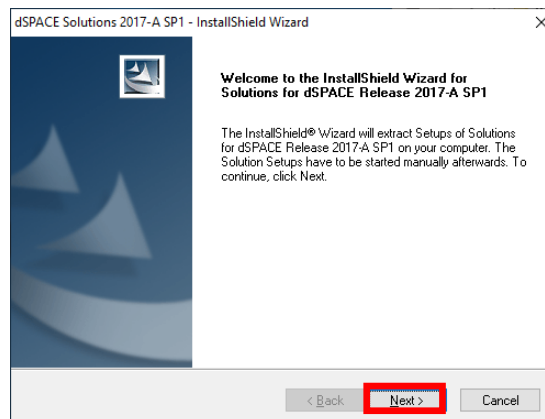
dSPACE Solution

It is required to specify the folder path of Solution DVD when you install dSPACE Solutions. You can see the installation procedure of DS1006QC Ethernet solution as an example.

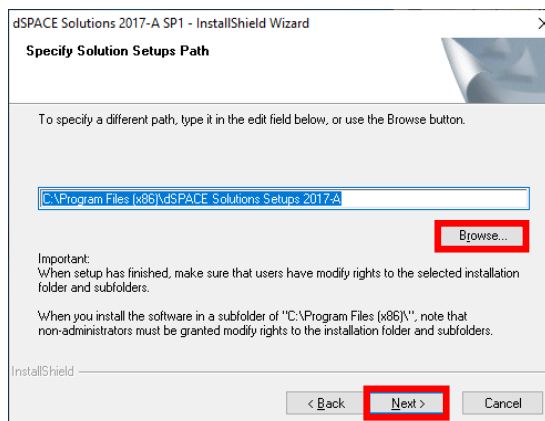
1. Specify the folder of Solution DVD where and click "Next" button.



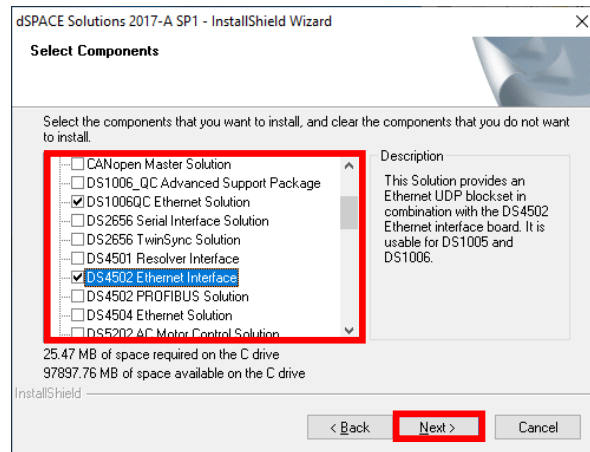
2. Click "Next" button.



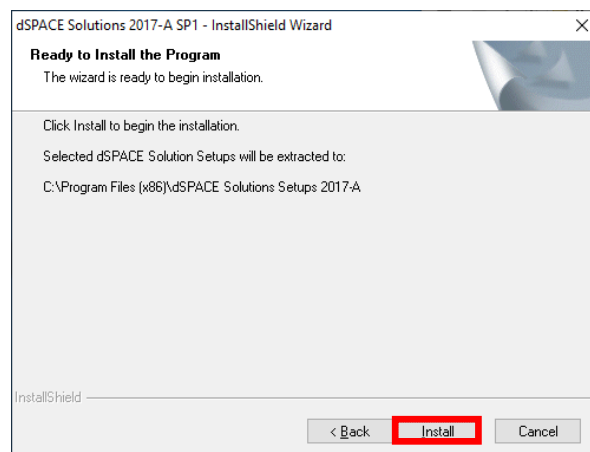
3. Specify the folder to install the installer of dSPACE Solutions by "Browser" button and click "Next" button.



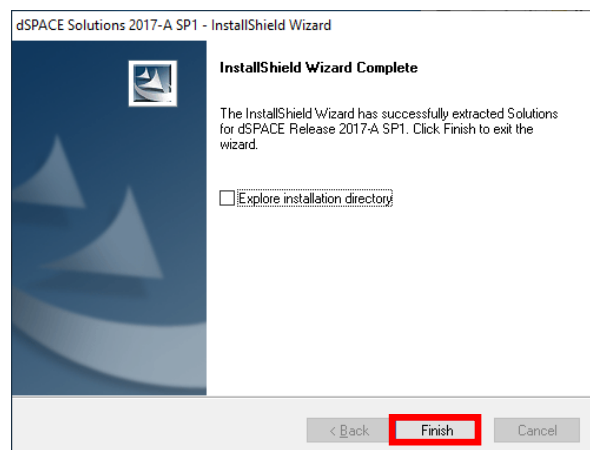
4. Select dSPACE Solutions which you want to install and click "Next" button.



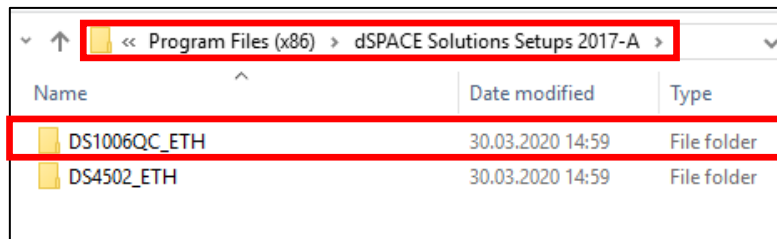
5. Click "Install" button and then the installation will be started.



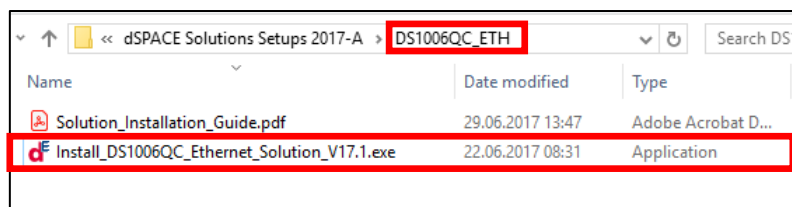
6. The installation of the installer for the dSPACE Solutions is done when the following message is displayed.
*Installation for dSPACE Solution is not yet completed.



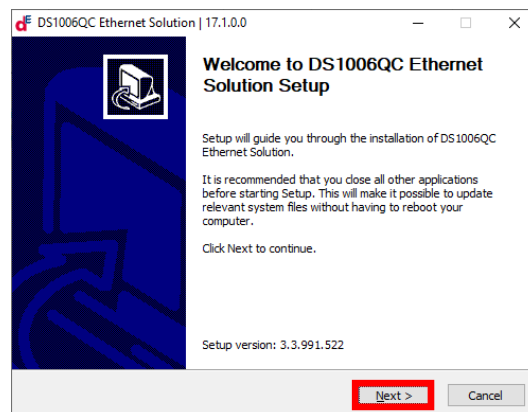
7. Open the folder where you installed the installers of dSPACE Solutions.
8. Move to the folder of the dSPACE Solution which you want to install.



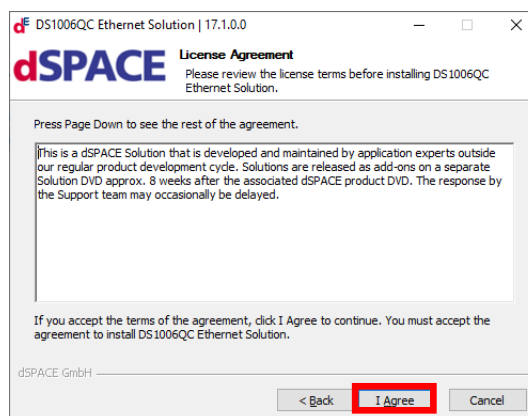
9. Execute "Install_DS1006QC_Ethernet_Solution_Vxx.x.exe"



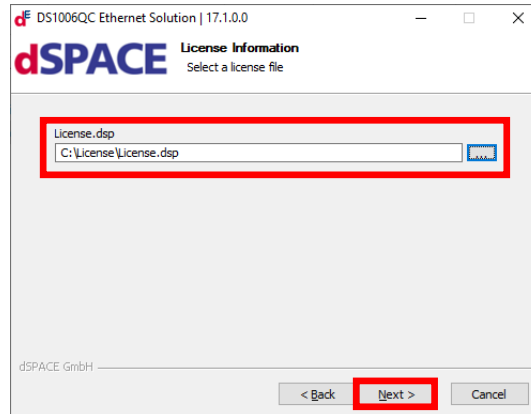
10. Click "Next" button.



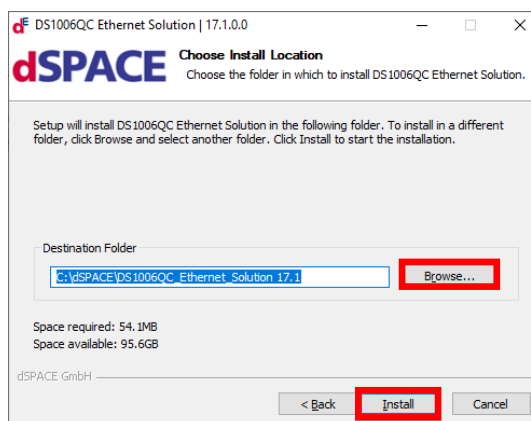
11. Click "I Agree" button.



12. Specify license.dsp file and click "Next" button.



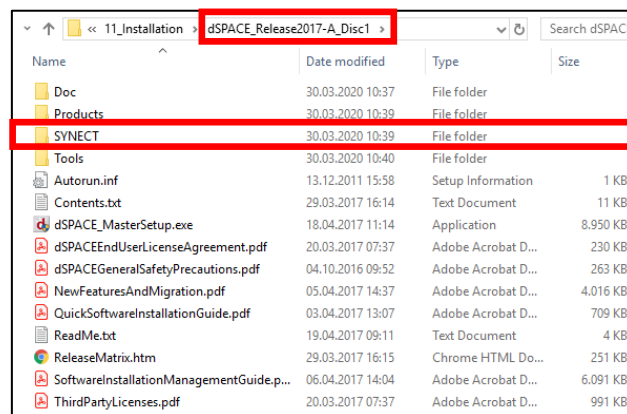
13. Specify the folder to install the installer of dSPACE Solutions by "Browse" button and click "Next" button.



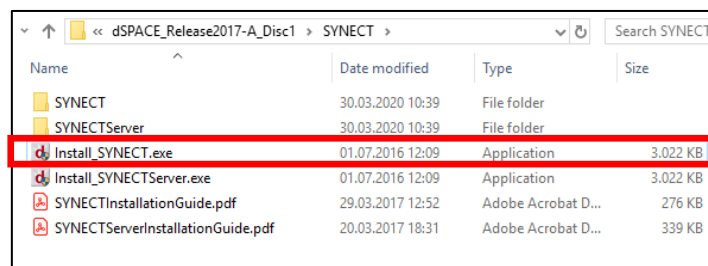
Other dSPACE Tools

Some dSPACE Tools are not installed with dSPACE_MasterSetup.exe. You can install these dSPACE tools by the installer for each tool. Each installer is located under "SYNECT" folder or "Tools" folder in Disc 1. You can see the installation procedure of SYNECT as an example.

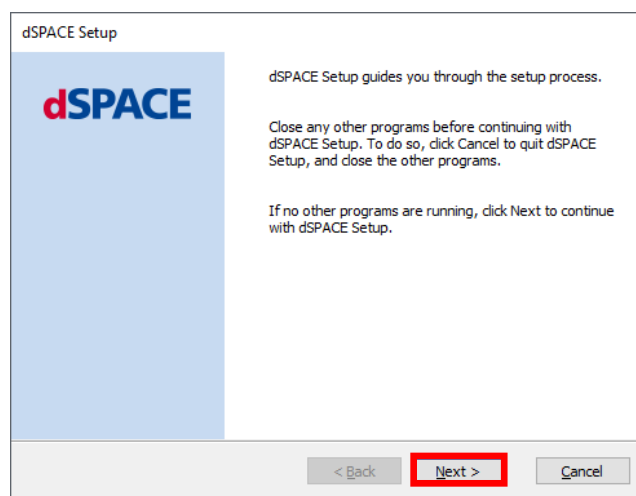
1. Move to "SYNECT" folder on Disc 1.



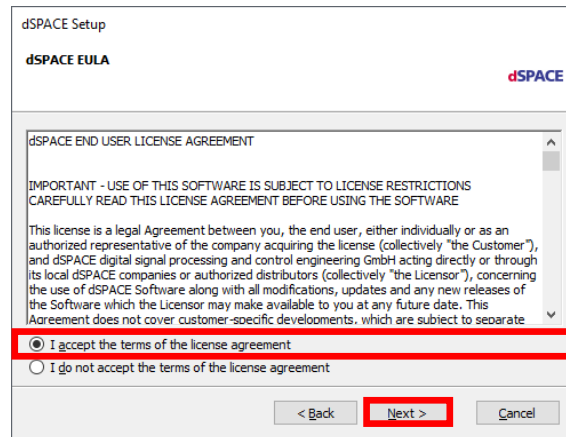
2. Execute "Install_SYNECT.exe"



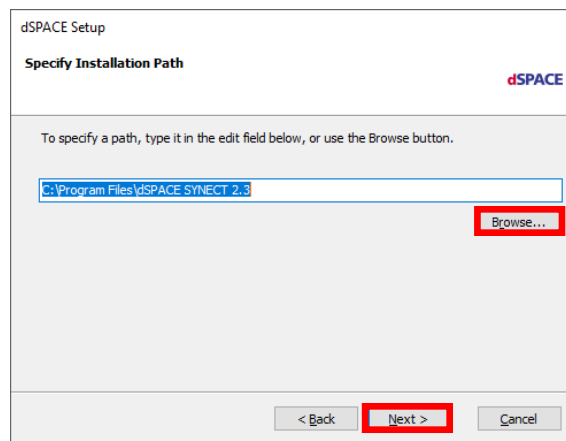
3. Click "Next" button.



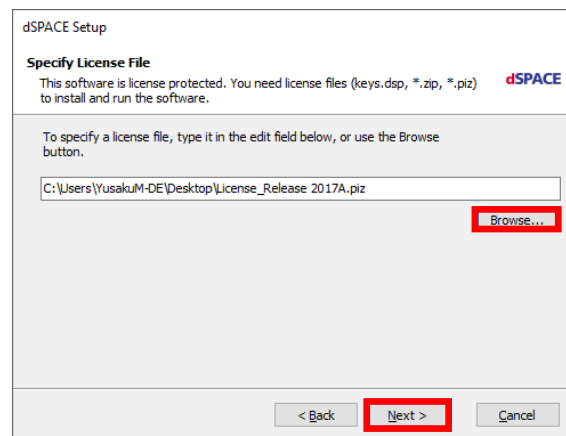
4. Read dSPACE EULA and Select accept.
5. Click "Next" button.



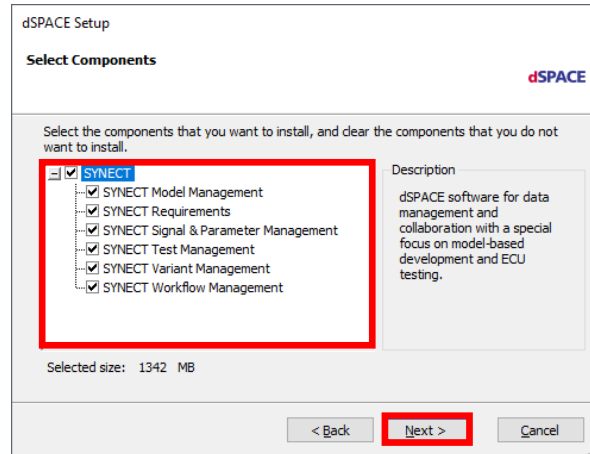
6. Specify the folder to install the installer of dSPACE Solutions by "Browse" button and click "Next" button.



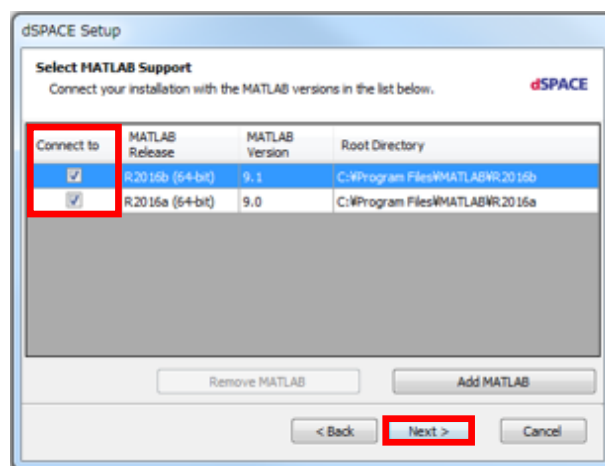
7. Specify your license file by "Browser" button and click "Next" button.
You can specify .zip, .piz and .key file.



8. Select components that you want to install.



9. Select MATLAB versions to connect to dSPACE RCP and HIL Software and click "Next" button.



10. Click "Next" button and then installation will be started.

